



supporting people &  
sustaining communities

## QUENIBOROUGH PARISH NEIGHBOURHOOD PLAN

### COMMUNITY ENGAGEMENT DROP-IN EVENT

Saturday 30th September 2017



## Consultation Results

---

<b>1. Background</b>	<b>2</b>
Project Brief	2
Publicity	2
Format of Event	3
<b>2. Results</b>	
Demographics	4
Traffic & Transport	5
Facilities & Services	8
Housing	9
History & Heritage	11
Footpaths & Bridleways	13
Renewable Energy	14
Environment	16
Open Green Spaces	17
Communications	20
Employment & Business	21
Flooding	23
Additional Comments	24
<b>ANNEX 1 – Publicity Poster / Flier</b>	<b>26</b>

## 1) Background

### **Project Brief:**

The RCC (Leicestershire & Rutland) was commissioned by Queniborough Parish Council to:

***Support the Queniborough Parish Neighbourhood Plan Working Group to inform and consult the community on the Neighbourhood Plan via one Community Engagement Drop-in Event.***

### **Aim:**

The aim of this event was to inform the community on Neighbourhood Planning and gain some initial feedback from residents on what they liked, disliked or would like to see improved within the parish.

### **Publicity:**

The event was publicised throughout the parish via:

- ❖ Publicity Leaflet distributed to all households (Annex 1)
- ❖ Articles in the Queniborough Gazette (Annex 1)
- ❖ Parish Council website

### **For Reference:**

This Drop-in event was held at the Queniborough Village Hall and held on a Saturday afternoon to help engage as many residents as possible.

## Drop-In Event Format

	ACTION	DETAILS
1 ↓	Sign In	<p>RCC Officer/Working Group Member asked attendees to complete a short registration form upon entering the event. This enabled the gathering of key demographical data including; post code, age, gender, ethnicity and employment status.</p> <p>RCC Officer/Working Group Member asked attendees to complete a contact details slip if they wanted to be kept updated with the NDP process following the event or help with the project.</p>
2 ↓	Introduction	RCC Officer/Working Group Members provided a brief introduction to the event including; background to the project, format of the event, how to have a say, and how to stay updated following the event.
3 ↓	Background to Project	Information outlining the background of the project was provided via a display board. Key points covered included: <i>What is a Neighbourhood Development Plan, why produce one, what a plan can and cannot do what the plan will look at and the designated NDP Area.</i>
4 ↓	Consultation on Key Issues	<p>A series of display boards were erected around the room, each of which focused on a different topic related to planning and development displaying some background information on the parish as listed below:</p> <ul style="list-style-type: none"> <li>- <b>Open Green Spaces</b></li> <li>- <b>Environment</b></li> <li>- <b>Footpaths &amp; Bridleways</b></li> <li>- <b>History &amp; Heritage</b></li> <li>- <b>Flooding</b></li> <li>- <b>Renewable Energy</b></li> <li>- <b>Facilities &amp; Services</b></li> <li>- <b>Traffic &amp; Transport</b></li> <li>- <b>Housing</b></li> <li>- <b>Employment &amp; Business/Economy</b></li> <li>- <b>Communications</b></li> </ul> <p>Having read each of the displays, attendees were asked to list the things that they liked, disliked, or wanted to see improved in relation to each topic area.</p>
5 ↓	Visual Maps	<p>Opportunity to indicate important Green Open Spaces.</p> <p>Coloured dots were provided for attendees to highlight green spaces that they valued within the parish (<b>Green</b> – 3 sites valued for visual amenity; <b>Blue</b> – 3 sites valued for recreational use).</p>
6 ↓	Additional Comments	Attendees were provided with blank slips to enable them to put forward any additional comments relevant to the project.

## 2. Results

<b>Demographics</b>			
<b>Total Attendance</b>	<b>60 attendees (53 registered)</b>		
	<b>Comments from the flyer - 5</b>		
	<b>Comments by email</b>		
<b>POST CODE AREAS REPRESENTED</b>			
LE7 3DA	1	LE7 3FE	1
LE7 3DB	4	LE7 3FH	1
LE7 3DE	1	LE7 3FL	1
LE7 3DG	2	LE7 3FP	2
LE7 3DH	1	LE7 3FR	1
LE7 3DL	1	LE7 3FT	3
LE7 3DP	6	LE7 3FX	4
LE7 3DQ	1	LE7 3FY	2
LE7 3DR	2	LE7 3GF	2
LE7 3DS	1	LE7 3PD	1
LE7 3DT	1	LE7 3RU	1
LE7 3DZ	1	LE7 3TT	4
LE7 3FA	2	LE7 3TU	2
LE7 3FB	1	LE7 3UY	1
LE7 3FD	1		
<b>Gender:</b>	Female	<b>23</b>	
	Male	<b>30</b>	
<b>Age Category:</b>	75 or over	<b>4</b>	
	65 – 74	<b>19</b>	
	55 – 64	<b>15</b>	
	45 – 54	<b>10</b>	
	35 – 44	<b>3</b>	
	25 – 34	<b>0</b>	
	18 – 24	<b>1</b>	
	Under 18	<b>1</b>	
<b>Employment Status:</b>	Employed (Full Time)	<b>13</b>	
	Employed (Part Time)	<b>6</b>	
	Self Employed	<b>2</b>	
	Full Time Education	<b>1</b>	
	Part Time Education	<b>0</b>	
	Unemployed	<b>0</b>	
	Retired	<b>28</b>	
	Housewife/Househusband	<b>4</b>	
<b>Ethnicity:</b>	White British	<b>48</b>	
	White Irish	<b>0</b>	
	White (other)	<b>2</b>	
	Indian	<b>1</b>	
	Other	<b>1</b>	

## Traffic & Transport

<b>Question / Instruction</b>	<p>IN RELATION TO TRAFFIC &amp; TRANSPORT</p> <p><i>WHAT DO YOU LIKE ABOUT QUENIBOROUGH PARISH</i></p> <p><i>WHAT DO YOU NOT LIKE ABOUT QUENIBOROUGH PARISH</i></p> <p><i>WHAT WOULD YOU LIKE TO SEE IMPROVED</i></p>
<b>Total Comments</b>	<b>69</b>

### COMMENTS

#### LIKE

##### **Volunteers**

- Speed camera volunteers were great
- Excellent roads - Syston nearby

##### **Bus Service**

- I think the bus service is really pretty good

#### NOT LIKE

##### **Speeding**

- Large traffic volumes speeding along Main St
- Don't like the speed bump!
- Too much speeding traffic going faster than 30 miles per hour
- Problems speeding traffic and HGVs
- Speeding is a problem

##### **HGV's**

- Too many lorries coming through centre of the village
- Too much heavy transport through villages

##### **Traffic**

- Traffic flow problems in the Ringway
- I don't think traffic lights at the cross roads would help or be useful or enhance the village
- School times create a big problem on Ringway & through the village
- Why do so many cars drive down Barkby Road. Where are they going?

##### **Bypass**

- Concerned about the proposed new northern by-pass. Do not want it (one person agreed to this comment)
- New bypass will bring more housing & business development if skirts round Queniborough will destroy the village. Do not want here
- What will be the impact of the proposed A46-A47 Link Road. It could take some traffic out of the village but will also create higher traffic levels at the crossroads as car cut through to Barkby and new developments there

##### **Parking**

- Parking by the Post Office can cause trouble
- Alco cars (parents picking up children from school) parking on pavements and green areas in front of Ringway

## WOULD LIKE TO SEE IMPROVED

### Speeding

- Speeding traffic is a main problem through the village. We need speed cameras and a width restriction like they have near the industrial estate between Barkby and Thurmaston. This would stop the HGVs and their illegal heavy traffic from using the village as a rat run
- Keep speed down by making speed ramps all across roads
- Keep speed down by detector illuminated signs showing speed they are doing
- Remove speed humps and replace with average speed cameras set at 20mph
- Reduce problems around the school with traffic. Better public transport needed to connect us to more of the County instead of just Leicester & Melton. (one person agrees to this comment)
- Speed restrictions need to be enforced. Even at 5:30am cars speed through our village
- Get rid of the bumps!
- No road humps – maybe (rumble) strips road markings
- Cut speeds of vehicles coming in to village down Barkby Road. Speed sign doesn't seem to mean anything to a lot of drivers

### Bus service

- The bus that comes as far as the crossroads could be re-routed to travel up Barkby Rd to Barkby then turn right & go into Syston, serving the new development and Barkby Rd in Syston. We also need a bus to go as far as the Church
- Buses - what ever happened to the bus service? No photographs? No mention? Try catching them or you will lose them
- Bus stop for 5A just past Queniborough Roundabout near football pitch
- Buses needed to go down Main St as they used to – for residents in that area
- Change the bus route
- Bus service to top end of village
- No to buses on Barkby Road in the future
- Bus service could be improved
- Need a later bus from Leicester 18:20 is ridiculous. (three people agreed to this comment)
- A more frequent bus service into Hinckley Coalville (one person agreed to this)
- Bus service from/to Leicester to run later into the evening
- Covered waiting areas at bus stops

### HGVs

- Stop the HGVs. 20MPH limit. Follow many HGs going to the A47 (one person agreed to this comment)
- Enforce the HGV ban
- Width restrictions need to be on all entering to the village to deter vehicles using us as a 'rat run'
- Keep large vehicles out of our village
- Too much heavy traffic. Enforcement needed to keep out HGV (one person agreed to this comment)
- A complete lorry ban
- Weight restrictions and speed limits should be properly 'policed' (two people agree to this comment)
- Restriction on size of vehicles through village

**Traffic**

- Congestion by Primary School on Coppice Lane. Addition of double yellow lines?
- Improve the traffic calming on Syston & Rearsby Road
- Measures needed to relieve congestion on Coppice Lane. Have had to wait 20 minutes for school buses, school deliveries and badly parked teachers' cars on a number of occasions. Also 3 posts together obscure vision turning right out of Coppice Lane
- Traffic is creating a huge problem with any new developments this will only increase the number of vehicles using our already overcrowded roads. What about cycle lanes?
- Traffic calming on Melton Rd, too many accidents are occurring

**Parking**

- Restrict school cars parking along Queniborough Rd of The Ringway – try walking
- Stop people parking on verges and pavements. (two people agree to this comment)
- Parking restrictions at school
- Parking bays outside shops
- Encourage school to use Village Hall car park am/pm
- Double yellow lines?
- No pavement parking (one person agreed to this comment)
- Queniborough is the main route out to Tilton - Can car – parkers please be kept from mashing the grass verges into extinction

**Signage**

- Less signage – should not be 40 & 50 mph signs to Village
- Have sign at top of Rearsby Rd except for emergency service – it is a C Road Syston Rd is B
- Signage for Queniborough Industrial state is poor – many come down Rearsby Road to turn into Syston Rd

**Crossroads**

- The crossroads are a death-trap of a disaster waiting to happen. Would traffic lights help???

**Park & Ride**

- Park and ride on the train from East Goscote cut down on cars

**Police presence**

- We also desperately need more of a police presence!

**Trains**

- I would like more frequent trains to Leicester from Syston Station

**Other:**

- Developers should pay for the roads they have ruined with their equipment



## Facilities & Services

<b>Question / Instruction</b>	IN RELATION TO FACILITIES & SERVICES  WHAT DO YOU LIKE ABOUT QUENIBOROUGH PARISH  WHAT DO YOU NOT LIKE ABOUT QUENIBOROUGH PARISH  WHAT WOULD YOU LIKE TO SEE IMPROVED
<b>Total Comments</b>	<b>22</b>

### COMMENTS

#### LIKE

- Park**
  - Like park behind Primary School
- Village**
  - Village well served especially with Syston so close, no issues
- Village Hall**
  - Village Hall – good range of services to the village

#### NOT LIKE

- Allotments**
  - No land available for allotments

#### WOULD LIKE TO SEE

- Allotments**
  - Allotments are needed nearby
  - Allotments urgently needed especially since the new housing estates houses have little or no gardens
  - Would like to see allotment spaces
  - Need allotments (one person mentioned 'yes' to this comment)
- Not needed**
  - As a small village, I believe we are well supported for all age groups. Scouts, friendship, 0-5, school
  - We have many – advertise them more!
- Scout Group/ Huts**
  - More support for local scout groups would be very welcome. The scout hut needs TLC by getting volunteers to support the fundraising & the work is hard. Any offers?
  - Scout group not supported by council or village adults as it should be
- Youth/ youth clubs**
  - Youth facilities needed
  - What is there for young people?
- Church School**
  - A new large Church School
- GP Practices**
  - Maybe a satellite GP service

**Public Services**

- More public services when developments are built are needed to ease pressure on Syston

**Swimming Pool**

- We must not lose our swimming pool, it's such an asset

**Village Hall**

- Improve village hall car parking – charge / or season ticket for parking

**Football pitch**

- Must keep football pitch. Any chance of permanent building changing rooms, function room etc

**Other**

- Want crossroads & trees to stay as they are
- Welcome leaflets to new home owners etc publicity officer required

**Housing**

<b>Question / Instruction</b>	IN RELATION TO HOUSING
	<i>WHAT DO YOU LIKE ABOUT QUENIBOROUGH PARISH</i>
	<i>WHAT DO YOU NOT LIKE ABOUT QUENIBOROUGH PARISH</i>
	<i>WHAT WOULD YOU LIKE TO SEE IMPROVED</i>
<b>Total Comments</b>	<b>44</b>

**COMMENTS****NOT LIKE****First time buyers**

- Little housing available for first time buyers
- Housing overdevelopment

**Large Developments**

- No more large developments
- No more large developments (one person agrees to this comment)

**Separation**

- No more breaking down of separation areas between Queniborough & other villages

**Housing type**

- Still lack of bungalows in new builds!
- No 3 storeys house more bungalows
- No more estates of 4 bedroom detached houses

**No more housing**

- The latest housing development means we have surely reached our quota. No more in the village. Queniborough has enough houses of every type

- Queniborough houses are more expensive because they are in a beautiful village location – that said we are currently unable to move from our semi to a detached because the jump up is too much. I don't think we need anymore "top end houses" on any more houses at all to be honest. Why does the village need to grow at all?
- No need for more houses. More houses increase population and traffic only causing more issues increasing urban sprawl
- No more houses please
- I think we now have quite enough houses – probably NOT enough affordable ones were provided for but now the damage is done! Enough is enough! Any more building & we shall be part of Thurmaston, Syston & Leicester – swallowed up! A tragedy that would be
- Once the village of Queniborough is gone – it is gone for good. So it must be preserved at all costs
- Surely we can pull the "plug" on new buildings for no of years school full/ health centre overwhelmed – we'll no longer be a village

### WOULD LIKE TO SEE

#### **Affordable/Starter Housing**

- Starter homes required
- More affordable homes bungalows (one person agrees to this comment)
- There is a need for 2-bedroom starter homes for family linked potential residents. It's unfair that some of our children will have to move away
- Infill housing with starter homes
- Infill housing should be for affordable starter homes, for first time buyers. No to larger developments so as not to over develop the village & surrounding area.
- More affordable houses and bungalows
- Infill of houses only, affordable for families
- More affordable homes so the young people stay in the village when they marry
- Keep some housing for the younger people i.e. affordable homes are important
- More affordable housing for current village residents.

#### **Small developments**

- Small developments only that should have character & charm
- Small developments only
- We have had a large number of houses built in the last 2 years & only very small infill developments please now
- No more large developments. Stop major alterations to old buildings, limit too much and infilling
- Please, please please. No more large developments of little boxes with miniscule patch of land. (one person agreed to this comment)
- No more large developments as roads will not be able to cope. We also do not have sufficient facilities
- Any new development should include affordable starter homes

#### **New development/Community**

- Queniborough is a community, its why we moved here. New houses need to fit in to the community
- When building new property it needs to add to the community not be just housing

#### **Type of Housing**

- Housing needed: bungalows, sheltered housing starter homes
- Sheltered/ retirement homes are in short supply, as are starter homes. Small, sensitively integrated development would help.

- If we have anymore infilling or buildings, they should be for the future use of our existing residents i.e. small social housing to help 1<sup>st</sup> time buyers and small bungalows for downsizing elderly residents

#### **Parking**

- All houses to have parking (off road) affordable housing often comes at a price – not straight forward

#### **Locations for housing**

- Next to roundabout opposite playfield is okay

#### **Infill**

- Extension of Queniborough boundaries totally unacceptable. Only infill
- Ensure that any 'infilling' is inspected carefully

#### **Other:**

- Don't mind more houses being built but not on the conservation areas
- If the minimum wage & zero hours contract were properly addressed, people could afford homes on the 'open market' we should pay people a living wage & there would be less need for "affordable" houses
- Ensure that much of Queniborough land e.g. roundabout / glebe land / agricultural land / is kept – much has been taken already

<b>History &amp; Heritage</b>	
<b>Question / Instruction</b>	IN RELATION TO HISTORY & HERITAGE
<b>Total Comments</b>	WHAT DO YOU LIKE ABOUT QUENIBOROUGH PARISH WHAT DO YOU NOT LIKE ABOUT QUENIBOROUGH PARISH WHAT WOULD YOU LIKE TO SEE IMPROVED
<b>Total Comments</b>	<b>37</b>
<b>COMMENTS</b>	
<b>LIKE</b>	
<b>Character</b>	
<ul style="list-style-type: none"> <li>• Character of village is wonderful. A good mix of old and new. Would not like to see it damaged</li> <li>• Character of houses</li> <li>• The character is a strong visual pleasure (one person mentioned 'I like')</li> <li>• The conservation area is a beautiful preserved area of the old village</li> </ul>	
<b>WOULD LIKE TO SEE</b>	
<b>Conservation area</b>	
<ul style="list-style-type: none"> <li>• Widen the conservation area e.g. include fields either side</li> <li>• Conservation area boundaries need to be adhered to Charnwood please note or there will be more new builds breaching the building law (85 Main St new development)</li> <li>• Increase to conservation zone. Keep the old houses</li> <li>• Extend conservation area. Protect Dovecote (two people agreed to this comment)</li> </ul>	

- We need to ensure the conservation area is kept and possible increased and extended It is important to preserve our village heritage (one person agrees with this comment)
- What are the criteria for the conservation area? Is it possible to increase the Queniborough Conservation area?
- Check that Re conservation area includes all the area
- Extend conservation area along Coppice Lane (one person agrees to this comment)
- No need to extend conservation area
- The conservation area of the village maintains the character & feel of the village. We need to protect this for the future
- Don't extend the conservation area
- It is important that we respect and use our preserved buildings – if we do not use our Church we shall lose it. Tell us how we can encourage you to join!! (one person agrees to this comment)
- Ensure the conservation area is kept

#### **Character of village**

- New housing / buildings to be keeping of village style. Not boxes with lids
- New development must retain character of village
- Keep the character of the village
- Keep character of village (one person agrees to this comment)
- Keep the linear character of our village

#### **Maintenance**

- The Dove Cot in the grounds of Queniborough Hall is in keeping with the landmark. It should be maintained
- Keep listed buildings in good condition. (one person agrees to this)

#### **Separation**

- Maintain separation of any infill housing to any “heritage” housing on site
- Ensure divide between village Syston/ East Goscote etc. the history character of the village is what keeps it unique

#### **Church**

- Maintain fabric of Church

#### **Green Verges**

- Ensure green verges are kept green

#### **Integration**

- The additional houses on Barkby Rd have no feeling of being integrated into our village. This is essential. Improved links (footpaths etc) are essential to keep us all feeling we belong

#### **Old School**

- Old school to be protected

#### **Swimming pool**

- Swimming pool to be protected (one person agreed to this comment)

#### **War Memorial**

- More respect for War Memorial please

#### **Other**

- Ensure no building is higher than a set limit, e.g. not taller than the Church

- Oh dear! My maternal family the Whittles lived here for centuries – I feel every day that I am seeing sights and views that they saw - but every year more changes for ever ... we must struggle to preserve Queniborough's integrity
- The current explosion of infill buildings detracts from the Conservation aspect of the village. No more infill
- Require Local History Group (like we need to have!!) suggest preservation society could instigate this very good e.g. Mountsorrel Heritage Museum (see on internet) worth a visit – it's free! On Swithland Lane, Rothley/ Mountsorrel
- Tapes owned by Tony Kedges – could be digitized. Numerous documents are held by Rosemary Smith Record villagers experience. Have a permanent display – Village Hall meeting room? / Church?

<b>Footpaths &amp; Bridleways</b>	
<b>Question / Instruction</b>	IN RELATION TO FOOTPATHS & BRIDLEWAYS  <i>WHAT DO YOU LIKE ABOUT QUENIBOROUGH PARISH</i>  <i>WHAT DO YOU NOT LIKE ABOUT QUENIBOROUGH PARISH</i>  <i>WHAT WOULD YOU LIKE TO SEE IMPROVED</i>
<b>Total Comments</b>	<b>14</b>
<b>COMMENTS</b>	
<b>LIKE</b>	
<p><b>Footpaths</b></p> <ul style="list-style-type: none"> <li>• Numerous footpaths around Queniborough</li> <li>• All the existing footpaths around the village (one person agrees to this comment)</li> <li>• Existing footpaths especially Coppice Lane (one person agrees to this comment)</li> <li>• Like the access to all the footpaths / bridleway, throughout the village like to see them protected</li> <li>• I like the old-fashioned stiles especially on the park</li> </ul>	
<b>WOULD LIKE TO SEE IMPROVED</b>	
<p><b>Footpath use</b></p> <ul style="list-style-type: none"> <li>• Footpaths are wonderful occasionally the cows scare me, but I'm in their home after all! We can't have fresh green fields with nothing in them, they have the risk of being filled with houses</li> <li>• Footpaths mostly good – occasionally made unsafe by loose horses / cattle in fields</li> <li>• (David Wilson has made rest of path good), can we improve them? Volunteers?</li> <li>• Sort out the style in King George V Fields, put in a 'gate' - the parish council does not agree with this!</li> <li>• Keep all existing footpaths open &amp; easily accessible to walk as some can become very overgrown and difficult to walk</li> </ul> <p><b>Access</b></p> <ul style="list-style-type: none"> <li>• There is good access from around the village to footpaths and bridleways. Keep them in good condition so they don't get over grown</li> </ul> <p><b>Bridleways</b></p> <ul style="list-style-type: none"> <li>• Bridle path from South Croxton Rd – becomes virtually unwalkable at times – very over grown &amp; muddy at the start</li> </ul>	

**Cycle route**

- Improvement - Cycle paths between villages (two people agreed to this comment)

**Signage**

- Would be used more if signage was there! e.g. Coppice Lane Bridle way / Queniborough to Syston footpath – clear at Queni end by nettles!!

<b>Renewable Energy</b>	
<b>Question / Instruction</b>	IN RELATION TO RENEWABLE ENERGY <i>WHAT DO YOU LIKE ABOUT QUENIBOROUGH PARISH</i> <i>WHAT DO YOU NOT LIKE ABOUT QUENIBOROUGH PARISH</i> <i>WHAT WOULD YOU LIKE TO SEE IMPROVED</i>
<b>Total Comments</b>	<b>58</b>
<b>COMMENTS</b>	
<b>LIKE</b>	
<b>Solar</b>	
<ul style="list-style-type: none"><li>• Solar powered energy</li><li>• Maybe solar energy</li><li>• Solar panels on houses are fine</li></ul>	
<b>NOT LIKE</b>	
<b>Wind Turbines/ Wind Farms</b>	
<ul style="list-style-type: none"><li>• No windfarms please</li><li>• No windfarms</li><li>• No wind farms single turbines</li><li>• No wind farms or individual wind turbines</li><li>• No wind farms</li><li>• Don't like big windmills</li><li>• No windfarms</li><li>• No wind turbines (wind farms)</li><li>• No to wind farms</li><li>• No wind farms</li><li>• No wind farms</li><li>• No large wind turbines</li><li>• No wind farms</li><li>• No individual wind turbines</li><li>• No wind farms or turbines</li><li>• Be vigilant to mass turbines</li><li>• No big wind turbines</li><li>• No large wind</li><li>• No wind farms</li><li>• No wind farms or turbines</li><li>• No wind farms</li></ul>	
<b>Solar</b>	
<ul style="list-style-type: none"><li>• No solar panels on view</li><li>• No solar panels on new builds</li><li>• No solar arrays</li></ul>	

- Solar farms not within the village
- No large solar farms
- No fields of solar panels
- Be vigilant to mass solar panel fields
- No solar panels on existing housing
- No large solar farms
- No “fields” of solar panels
- No solar panels seem to be on all the new builds (no turbines in gardens!)

#### **Subsidised energy**

- I do not like any government subsidises energy (one person agrees with this comment)

### **WOULD LIKE TO SEE /SEE IMPROVED**

#### **Solar Panels**

- Solar panels for all housing wherever possible (not thatched or conservation area if necessary)
- Solar panels on scout hut village hall and school. (one person agrees to this comment)
- New solar panels on south facing roofs to help villages supply.
- New houses should be built with solar panels incorporated within the roof  
New homes to incorporate solar panels
- Solar energy should be compulsory for all new buildings, as should water efficient systems passive ventilation, etc
- Solar panels on school scout hut village hall all okay
- Solar panels should be fitted where possible including strengthening roof timbers where necessary
- Incorporate on new Housing within village. Solar panels on roof also on village Hall School
- new developments should have solar panels built in
- Build new homes and incorporate solar panels
- Put solar panels on south facing roofs
- Solar panels on new build houses & established dwellings when possible
- Solar energy where possible

#### **Wind Turbines/ Wind Farms**

- Small wind turbines in private gardens also okay

#### **Efficiency**

- Energy efficient homes
- New house developers to incorporate energy efficient schemes

#### **Ground source heating**

- Ground source heating where possible
- Ground source heating on all new estates or small district schemes

#### **Drains**

- Drains cleaned more often

#### **Nuclear Reactors**

- Small scale Nuclear Reactors please

#### **Renewables**

- Need more renewables or roofs

#### **Other**

- Encourage households to conserve energy / water



## Environment

<b>Question / Instruction</b>	<p style="text-align: center;">IN RELATION TO THE ENVIRONMENT</p> <p style="text-align: center;"><i>WHAT DO YOU LIKE ABOUT QUENIBOROUGH PARISH</i></p> <p style="text-align: center;"><i>WHAT DO YOU NOT LIKE ABOUT QUENIBOROUGH PARISH</i></p> <p style="text-align: center;"><i>WHAT WOULD YOU LIKE TO SEE IMPROVED</i></p>
<b>Total Comments</b>	<b>21</b>

### COMMENTS

#### LIKE

- The green & agricultural area around the village is what keeps us a village, creates a safe place to relax & enjoy the wildlife. I love the fact that my Beaver Scouts enjoy our countryside on the door step

#### NOT LIKE

- Fly tipping and dumping, street food & drink containers much increased recently – not necessarily by village resident but needs cleaning
- I have seen not a single wasp this Late Summer / Autumn – unprecedented!! A small phenomenon maybe – but we should consider the implications – small phenomenon / GT implications!

#### WOULD LIKE TO SEE / SEE IMPROVED

##### **Wildlife**

- Have a new wildlife site along Ridgemere (one person agrees to this comment)
- Keep all wildlife sites secure from development. Ridgemere needs special protection (one person agrees to this comment)
- Area around dovecote can be used better wildlife etc
- Create wildlife & environment parks/ areas

##### **Nature/ Nature reserve**

- Creation of nature reserve (Ridgemere)
- A nature reserve within the parish would be good (one person agrees to this comment)
- Improvement - Promotion of nature (school) e.g. bug boxes, bird boxes etc

##### **Community Orchard**

- Creation of community orchard

##### **Conservation area**

- Extend conservation area further down Coppice Lane

##### **Farmers**

- Farmers need styles to keep livestock in. remember farmers need to make a living from their land

##### **Football Pitch**

- Football pitch must be kept as a green area

##### **Grass**

- Keep the grass under control

##### **Other:**

- Trim back briars
- Keep surrounding country side in Parish boundary

## Open Green Spaces

<b>Question / Instruction</b>	<p style="text-align: center;">IN RELATION TO OPEN GREEN SPACES</p> <p style="text-align: center;"><i>WHAT DO YOU LIKE ABOUT QUENIBOROUGH PARISH</i></p> <p style="text-align: center;"><i>WHAT DO YOU NOT LIKE ABOUT QUENIBOROUGH PARISH</i></p> <p style="text-align: center;"><i>WHAT WOULD YOU LIKE TO SEE IMPROVED</i></p>
-------------------------------	---

<b>Total Comments</b>	<b>31</b>
-----------------------	-----------

### COMMENTS

#### LIKE

- The playing fields and play areas are excellent
- St. Georges playing field & football field
- Coppice Lane
- Footpaths

#### WOULD LIKE TO SEE /SEE IMPROVED

##### **Keep/ protect and preserve**

- Keep all green fields safe from development they are local treasures. Protect the Ridgemere
- Open spaces and green spaces need to be kept and more areas need to be sought to have more open / green spaces
- Keep green wedge around the village between Syston, Barkby and Rearsby
- Keep Queniborough special with open areas being built we didn't want to merge with adjoining villages
- We need our green space! We need our verges. We need our green belt land
- Keep Queniborough separate – it is special (one person agreed to this comment)
- Any possibility of adopting the field with the Dovecote & brook in?
- Must keep football pitch.
- Please keep our village rural green belt getting less and less
- Keep the green space – this means at the back of the village by the pubs – not just King George V and football pitch
- Please can we keep our ancient & Historic villages separate & intact
- Green / open spaces are important, but require maintenance. We need to protect the areas we have
- Preserve at all cost (one person agreed to this comment)
- Keep current areas e.g. parks in good condition. Protect surrounding countryside
- Keep the open fields around Queniborough (five people agreed to this comment)

##### **Housing**

- No more large housing development (two people agrees to this comment)
- No more new houses are needed here – help us keep our identity
- No further use of land outside the border for housing or anything else (one person agreed to this comment)

##### **Bypass**

- Say no to Northern Bypass should it threaten to come our way. (four people agreed to this comment)
- No to any threatened bypass

##### **Litter picks**

- Sponsored litter pick

**Play areas**

- The play area for young children (1-3yrs) needs mowing more regularly. Also, could it be enlarged to give some room for free play away from dogs

**Other**

- In a nutshell, no more houses, no more traffic, slow down cars, no HGVs (one person agrees to this comment)
- Hedges (e.g. Queniborough Rd & verge – could be improved
- Could streets be adopted by residents & kept smart
- We won the best kept village years ago – aim to try again
- Enhance entrances & exits to village & village Hall garden!

**Important Open Green Spaces**

**Question / Instruction**

Please use the sticky dots provided to identify on the map any important green spaces that you value in the Parish

Please place a **BLUE** dot on up to 3 green spaces that you value most for Leisure & Recreation (e.g. walking, cycling, relaxing, playing, or sport).

Please place a **GREEN** dot on up to 3 green spaces that you value most for their visual amenity (view of, from or within the village).

A map was provided of the settlement area for attendees to use to place their Blue and Green dots. The end result is shown opposite.



## Communications

<b>Question / Instruction</b>	<p style="text-align: center;">IN RELATION TO COMMUNICATIONS</p> <p><i>WHAT DO YOU LIKE ABOUT QUENIBOROUGH PARISH</i></p> <p><i>WHAT DO YOU NOT LIKE ABOUT QUENIBOROUGH PARISH</i></p> <p><i>WHAT WOULD YOU LIKE TO SEE IMPROVED</i></p>
<b>Total Comments</b>	<b>34</b>
<b>COMMENTS</b>	
<b>LIKE</b>	
<ul style="list-style-type: none"> <li>• Can receive superfast broadband</li> </ul>	
<b>WOULD LIKE TO SEE / SEE IMPROVED</b>	
<p><b>Mobile signal</b></p> <ul style="list-style-type: none"> <li>• Better mobile phone connection as ours doesn't always work</li> <li>• Better mobile phone reception needed (one person agreed to this comment)</li> <li>• Need more mobile phone masts</li> <li>• Improved mobile reception needed (one person agreed to this)</li> <li>• Better 3G &amp; 4G connection</li> <li>• Improve mobile phone service masts in the village hall?</li> <li>• For an improved mobile phone signal, would a new mast be needed? If so, is this being discussed?</li> <li>• Better mobile phone reception</li> <li>• Better mobile phone reception throughout the village (one person agrees to this comment, ref EE signal)</li> <li>• Improve mobile phone reception</li> <li>• Need better mobile reception</li> <li>• I live beyond the 2 pubs and before the Church – mobile phone reception/ signals are terrible and I can promise you have not got better since 2011!! (whatever the Government may say)</li> <li>• Better mobile phone reception (one person agreed to this comment)</li> <li>• Improve mobile reception! (one person commented on this saying "ditto")</li> <li>• Better mobile phone reception needed</li> </ul> <p><b>Broadband- improve</b></p> <ul style="list-style-type: none"> <li>• Internet connection as ours doesn't always work</li> <li>• Better speed and Internet</li> <li>• Faster broadband needed</li> <li>• Improve broadband service masts in the village hall?</li> <li>• Improved broadband speed</li> <li>• I live beyond the 2 pubs and before the Church –Broadband reception/ signals are terrible and I can promise you have not got better since 2011!! (whatever the Government may say)</li> <li>• Superfast broadband? What superfast broadband! 3-5 if we're lucky!</li> </ul> <p><b>TV</b></p> <ul style="list-style-type: none"> <li>• TV Reception affected by leaves and trees in summer</li> <li>• Improve access to virgin provision to whole village not just certain parts</li> <li>• Need better TV reception</li> </ul> <p><b>Communication boxes</b></p> <ul style="list-style-type: none"> <li>• Communication boxes to be more discrete. Sometimes put in what appears to be an easy place but not the best</li> </ul>	



- The box like constructions which contain the communications systems could be lively painted by local artists/ designers (and paid for their work (one person agreed to this comment)
- Telephone line**
- I would like the telephone line on South Croxton Road upgraded so 30 residents can receive superfast broadband
- Gazette**
- Gazette – ensure all organisations give short report on their activities
- Leaflets**
- Leaflet on footpaths & village
- Notice boards**
- Notice boards – tatty – require updating & be more pro-active e.g. village could have one by bus stop, triangle boards have very little in it! Could be moved closer to corner shop
- Other**
- Co-ordinate with all organisations so activities do not clash with some already planned. Bad e.g. sept 30<sup>th</sup>!!!
  - Years ago, Village Hall committee had representatives from each organisation in Village – would report back so there was more involvement – dates etc could be discussed

<b>Employment &amp; Business</b>	
<b>Question / Instruction</b>	IN RELATION TO EMPLOYMENT & BUSINESS
	<i>WHAT DO YOU LIKE ABOUT QUENIBOROUGH PARISH</i>
	<i>WHAT DO YOU NOT LIKE ABOUT QUENIBOROUGH PARISH</i>
	<i>WHAT WOULD YOU LIKE TO SEE IMPROVED</i>
<b>Total Comments</b>	<b>23</b>
<b>COMMENTS</b>	
<b>LIKE</b>	
<p><b>Current business</b></p> <ul style="list-style-type: none"> <li>• Current businesses in keeping with village life</li> <li>• Mix of businesses, 2 pubs</li> <li>• There is a good mix of businesses &amp; an industrial area already integrates well</li> <li>• Nice group of local businesses. Industrial estate nicely concealed</li> <li>• Industrial units are good. No more needed. (one person agrees to this)</li> <li>• We are very lucky in that we have a good mix of shops i.e., paper shop, post office, hairdressers &amp; butchers</li> </ul>	
<b>NOT LIKE</b>	
<ul style="list-style-type: none"> <li>• Don't want big or noisy industry</li> <li>• I don't believe we need any more businesses. I'm quite shocked at how big the development is behind Branston's.</li> </ul>	

- I believe we have enough businesses in the parish
- There are enough industrial units/ businesses within the parish – no more
- Tidy up industry estate & rubbish at crossroads store “house” is unpleasant to see and encourage pests
- Claims by developers of how much employment their schemes would provide are dreamt up in cloud cuckoo land (two person agrees to this comment)

### LIKE TO SEE /SEE IMPROVED

#### **Businesses**

- Local and small businesses only. More business space is needed in general
- Support the local independent businesses or we will lose them (one person agreed to this comment)

#### **Industrial areas**

- Industrial areas rather than dotted around, however the industrial area behind Branston’s is a disgrace – business/ landlords to look after the privilege of working in village
- I agree that the industrial area behind “Branston’s” is a disgrace. Some additional small businesses would be useful but should be in a well-kept environment (one person agrees to this comment)
- Queniborough is a village – Syston is a town – anymore industry should be sited there (one person agrees to this comment)
- Where would we site more industrial units for businesses? Working from home is a possibility but IT (broadband & mobile phone signal) need much improvement.
- The industrial estate – seems well organised – no of local people employed there. great deal seems to be done at home – ebay etc

#### **Coffee Shop**

- Maybe a coffee shop where people can meet for a chat (one person commented saying “yes” to this)
- Coffee shop please
- Perhaps a coffee shop/ library/ book exchange/ space for photography / art group etc?

#### **Other**

- O glory!! Please!! No more building of this type! For what is that wasteland beyond “Clarks” & before “The Horse & Groom?” a disgrace

## Flooding

<b>Question / Instruction</b>	IN RELATION TO FLOODING
	<i>WHAT DO YOU LIKE ABOUT QUENIBOROUGH PARISH</i>
	<i>WHAT DO YOU NOT LIKE ABOUT QUENIBOROUGH PARISH</i>
	<i>WHAT WOULD YOU LIKE TO SEE IMPROVED</i>
<b>Total Comments</b>	<b>6</b>

### COMMENTS

#### NOT LIKE

##### New housing

- Dislike siting of new housing development which will cause flooding problems for existing homes (two people agree to this comment)
- New housing could create flooding in areas where it's not seen before. We live at the bottom of the valley and can't stop flooding – we just need to be mindful of it

#### WOULD LIKE TO SEE /SEE IMPROVED

##### Flood Risk

- Recent flooding off Barkby Road where the new development is taking place What a surprise – not!
- More consideration needs to be taken into flooding risks when approving developments
- More account taken of flood risk when considering new planning applications

##### Other

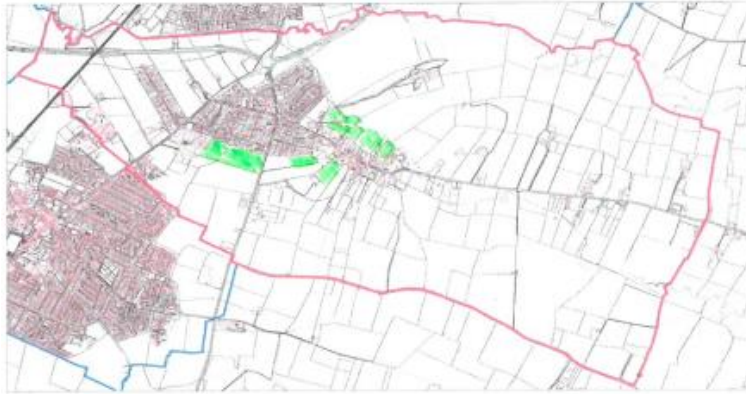
- Can we have a reservoir? (one comment has been made to this saying “but why?”)



## Additional Comments

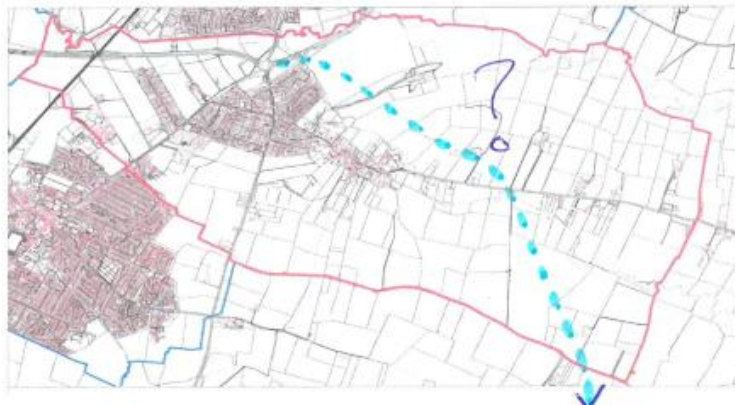
- Until we know the route of the new Leicester Eastern bypass it seems difficult to plan for our villages development. However, in order to maintain the “shape” of our village, and without knowing how many houses we will be asked to accommodate, the areas shown in green on the map seem to me to be areas for development whilst keeping the villages “shape” I would hope additional facilities would evolve over time as our village has over the last 500 + years.

If the bypass comes in to the north of the village, then Queniborough will unfortunately grow beyond recognition up to the edge of this new blot on our rural landscape. See highlighted areas on map overleaf.



- Should the new “Leicester Eastern bypass” run to the north of our village to join up with the existing A606 island, then our village will change beyond recognition (see over)

This must become our 1<sup>st</sup> priority to ensure this is not allowed to spoil our village (sorry will be unable to attend meeting on the 30<sup>th</sup> away)



- Queniborough needs to stay as a village so no more big development protect our green spaces, footpaths & Bridleways.

Protect this conservation area & extend it.

Protect our historic buildings & visual delights of the village

Support our local services maintain this beautiful village

- People move to Queniborough because we are a village. Don't kill the goose that lays the golden egg by overdevelopment. Slow the traffic, stop the rat run.

- Apologies for the enclosed scrawl. Don't know whether it's any help but haven't time to edit it or check. Appreciate all your trying to achieve!
- County Council appears determined to overrule Village life – if not careful we'll just be a suburb. Queniborough has not been looked after – Syston bypass/ Rearsby bypass (or Queni bypass) all on Queniborough land!!

- 
- Unfortunately I missed the two consultation sessions, so many of these ideas may have already been listed.

**How would I like to see Queniborough develop over the next 20 years?**

- Protect conservation areas and open spaces
- Less through traffic to M1/A47
- Less major house developments
- Improve school parking facilities
- Tarmac the village hall car park
- Improve shop + park options
- Improve WIFI Coms for village

Perhaps we need a bypass?

This subject appeared in the recent news, and could offer benefits for the majority of Queniborough in the longer term.

- Improve village conservation
- Less through traffic in village
- Provide alternative housing development options with good traffic links in E and S/E of Leicester
- Create safe shop + park area
- Create safe school drop off area

# ANNEX 1 Flyer

## Want to find out more and get involved?

The topics we will be focusing on at the consultation event are: Public Rights of Way ; History and Heritage ; Open Spaces & Environment ; Facilities and Services ; Traffic and Transport ; Housing ; Renewable Energy ; Communications ; Local Economy/Employment and Business.  
We need your views.

### Ways to give us your views

1. Come along to the consultation session in the Village Hall on Saturday 30<sup>th</sup> September which will run between 3.00pm and 7.00pm.
2. Email your views to [jones.michael8@sky.com](mailto:jones.michael8@sky.com)
3. Write your views in the box below and post it through the door of either 34 Syston Road or 149 The Ringway.

Please give us your views as they are absolutely key to this process. Further comments can be added by attaching an extra piece of paper.

## QUENIBOROUGH NEIGHBOURHOOD PLAN



### PUBLIC DROP-IN EVENT

Following on from the drop-in events held in January and February 2017, The Queniborough Neighbourhood Plan Steering Group are hosting a Community Consultation Event which is being held on **Saturday 30<sup>th</sup> September 2017, BETWEEN 3pm –7pm Village Hall, Rearsby Road, Queniborough, LE7 3DH**



### This is Your Chance to Help Plan the Future Development of OUR Parish.

Please give us an hour of your valuable time to help Plan the Future Development of the Parish for you, your children and grandchildren. We will do the rest.

## QUENIBOROUGH NEIGHBOURHOOD PLAN PUBLIC DROP-IN EVENT

This consultation forms part of the process to produce a Neighbourhood Plan for Queniborough.

The information and views gathered will be used to build up evidence to inform the contents of the plan and help to ensure that it represents the needs and views of the local community.

### What is Neighbourhood Planning?

Neighbourhood planning is a new process within the reformed Town and Country Planning System. It has been agreed by Government through the Localism Act, which provides the community with an opportunity to influence the planning and development of their area by producing a statutory planning document. Once made it will be used to help inform decisions in relation to future planning applications across the parish. The Neighbourhood Plan will allow those who live, work and have a business in the area to have a say on:

- The most appropriate places for new homes, shops, offices, leisure facilities and other developments to be located.
- What type of development is needed and what it should look like.
- Which important green spaces and other important areas should be protected.
- What improvements or additions to local facilities and services will be required alongside any development.

### Why Do We Need a Plan?

The planning system helps decide what gets built, where and when. In theory, planning has always supposed to give local communities a say in decisions that affect them. However, in practice, people have often found it hard to get their voice heard.

The Neighbourhood Planning process will result in the production of a legally recognised document which will be used to ensure that the needs, views and priorities of the local community are fully considered when assessing future planning applications and proposed developments within the area.

A Neighbourhood Plan will provide a great opportunity for you to have more influence on how Queniborough will change over time. Your local knowledge and good sense of what should be protected and what needs to change, can now really make a difference.

### Who is Producing the plan?

The production of the Queniborough Parish Neighbourhood Plan is being led by a Steering Group of local volunteers who live, work or do business in the area. They are developing the plan with the full support of the Queniborough Parish Council.

The success of the plan will rely on ongoing input and support from local residents, businesses, land owners and other organisations active within the parish.

Opportunities will be provided for ALL members of the community to engage in and inform the production of the plan. If you would like to get involved in the process, have your say on future development and help to plan for the future of the village, come along to this event and give us your views.



**QUENIBOROUGH'S QUEST FOR A  
NEIGHBOURHOOD PLAN CONTINUES**

Queniborough Village Hall - Saturday 30th September  
between 3.00pm and 7.00pm.

One of the most significant dates in the recent history of  
Queniborough Village.

This is the single most important meeting for Queniborough Village since the Wind Farm meetings a few years ago. The views and support we got from people attending the windfarm meetings back then gave us the mandate we needed to stop Scottish Power from building a huge wind farm at the top of the village, which would have affected all our lives for 25 years.

This meeting will lay the ground rules for all future development in Queniborough for generations to come. If you love this village we need you to attend this session, sometime to suit you, between 3.00pm and 7.00pm on Saturday 30<sup>th</sup> September in the Village Hall.

You will have a chance to meet the Steering Group and our consultants and ask all the questions you have regarding the process, the plan and the impact it will have on the Village. You will also have the chance to let us know what you feel about the village and what you think it should look like in the future, what you would like to protect and what you would like to see changed.

The information we gain from you will directly feed into our Neighbourhood Plan which once accepted will be a key consultation document for all future development applications. Once accepted the Neighbourhood Plan will be enshrined in law because the Neighbourhood Plan forms a key part of the Government's Planning Processes. It can't be bypassed or ignored; it will form part of our protection and safety net against any and all potentially disastrous future developments.

If we get it right we will have a say where, when and what development will take place in Queniborough for the foreseeable future. If we get it wrong or we don't have a plan in place, developers will have free rein within our wonderful Village.

Your invitation to this event is in a flyer which has been inserted into this month's Gazette. Please, please don't ignore it or throw it away. Have a read, as it explains in more detail what this process is all about.

If you really can't spare an hour to attend the event, the last page of the leaflet outlines other ways in which you can send us your views.

This is too important to ignore, so please don't.

All our documents and the minutes of our meeting are available on the Parish Councils website under <http://www.queniboroughpc.org.uk/neighbourhood-plan.html>. Please feel free to have a look.

If you would like more information or like to get involved please contact Mike Jones via email on [jones.michael8@sky.com](mailto:jones.michael8@sky.com) or telephone on 01162607773. Thanks in advance.

**Pam Jones, for and on behalf of the QNP Steering Group.**



## Rural Community Council (Leicestershire & Rutland)

*Charity No. 1077645 Company No. 3665974*

**T: (0116) 266 2905**

**E: [info@ruralcc.org.uk](mailto:info@ruralcc.org.uk)**

**W: [www.ruralcc.org.uk](http://www.ruralcc.org.uk)**

**Community House,  
133, Loughborough Road,  
Leicester, LE4 5LQ**

